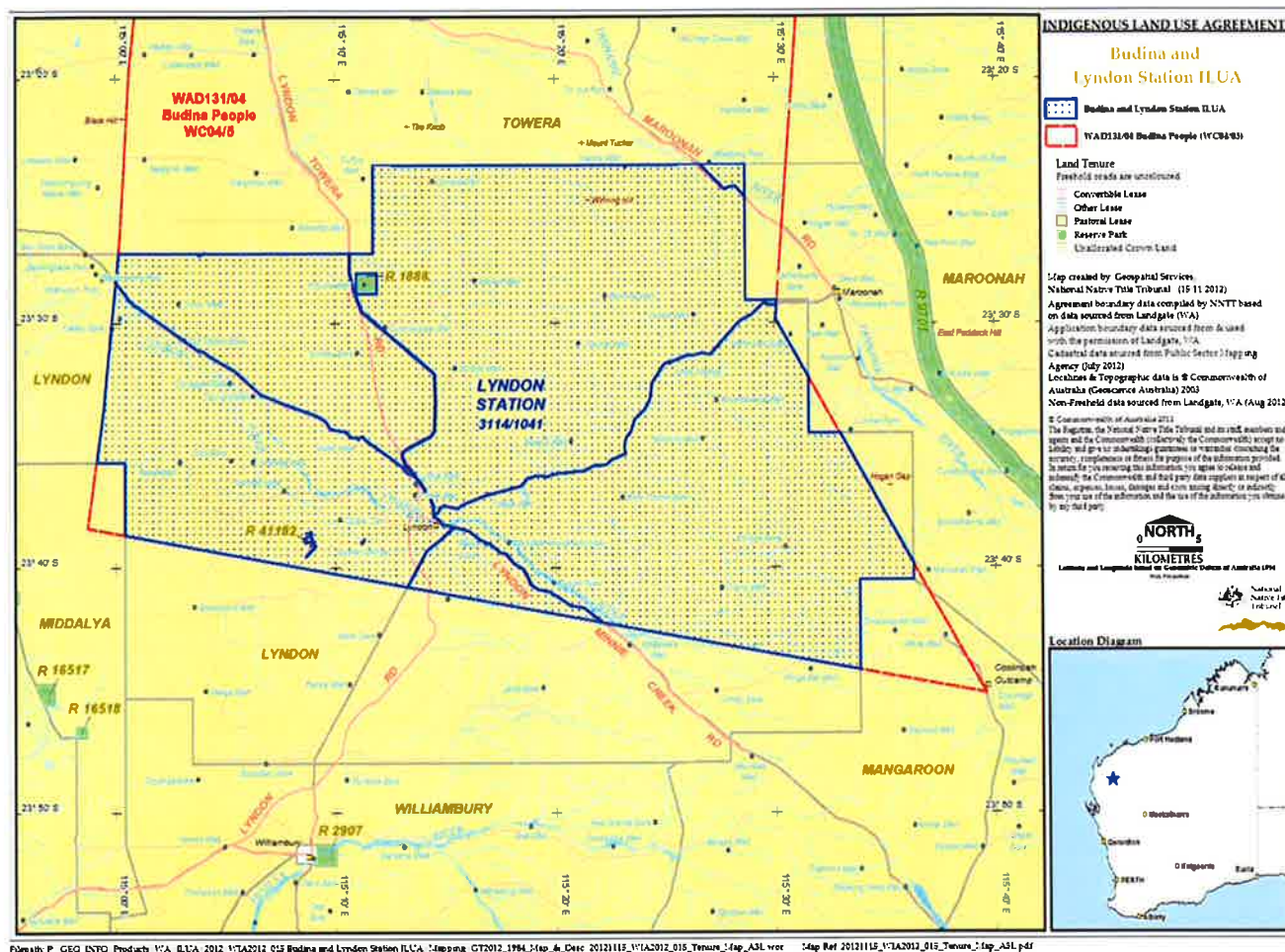


SCHEDULE 4**MAP OF AGREEMENT AREA:****WORD DESCRIPTION OF AGREEMENT AREA****External boundary description**

The ILUA area covers all the lands and waters subject to that part of Pastoral Lease 3114/1041 (Lyndon) within the external boundary of native title determination application WAD131/04 - Budina People (WC04/5) as accepted for registration on 19 August 2005, being an area north of a line defined as passing through the following coordinate points:

- **Longitude (East) Latitude (South)**

- 115.003473 23.438628
- 114.990658 23.560134
- 114.978912 23.639774
- 115.659886 23.752225
- 115.500866 23.497482
- 115.544568 22.957428